

## WIRELESS HIGH PRECISION DIGITAL INDICATORS



ABSOLUTE ENCODER, THE ORIGINAL DATA REMAINS AFTER POWER OFF

ATTENTION: RECHARGEABLE BATTERY, FOR 24 HOURS CONTINUOUS WORKING

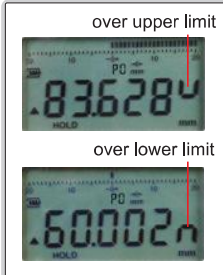
CONTINUOUS DATA COLLECTION CAN BE CUSTOMIZED (PRESS "DATA" BUTTON TO START CONTINUOUS COLLECTION, PRESS AGAIN TO STOP; COLLECTION FREQUENCY CAN BE CUSTOMIZED, THE FASTEST DATA COLLECTION IS 10PCS PER SECOND)

LINEAR BALL BEARINGS FOR TEN MILLION TIMES USE

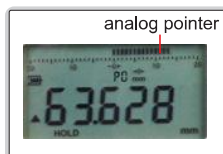


VIDEO

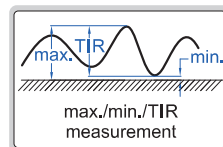
alarm when over tolerance



analog pointer



max./min./TIR



spindle lift knob is included



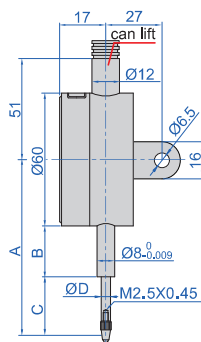
2134-10A



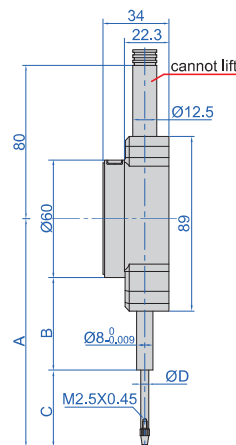
2134-25A



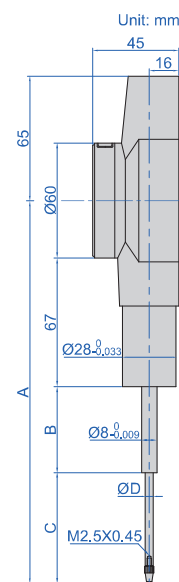
2134-50A



2134-10AL  
2134-101AL



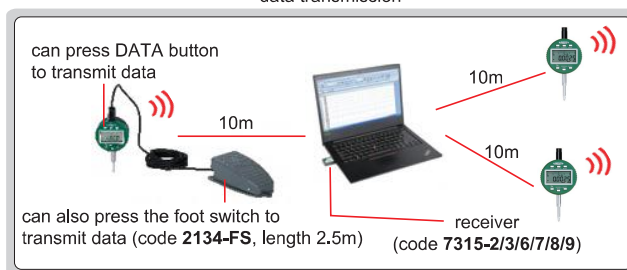
2134-25A  
2134-251A



2134-50A

- Built-in wireless transmission
- Transmission distance is 10 meters (under the condition of no obstruction and no electromagnetic interference)
- Linear ball bearings for ten million times use
- Absolute encoder, the original data remains after power off
- Reading in digital and analog
- Button function: data output, tolerance, data preset, data hold, measuring direction change, max./min./TIR, power off time, on/off, mm/inch, adjust resolution
- Power: rechargeable battery, for 24 hours continuous working
- Optional accessory: contact points (page 310~314), foot switch (code 2134-FS, length 2.5m) wireless receiver (code 7315-2/3/6/7/8/9)

data transmission



### Standard accuracy

Carbide probe

Adjustable resolution: 0.0005mm/0.00002"

0.001mm/0.00005"

0.01mm/0.0005"

(mm)

Code	Range	Accuracy	Hysteresis	A	B	C	ØD	Maximum measuring force	Cap	Remark
2134-10A*	12.7mm/0.5"	3µm	1.5µm	75.4	20.6	24.8	5	1.5N	can lift	flat back
2134-10AL*	12.7mm/0.5"	3µm	1.5µm	75.4	20.6	24.8	5	1.5N	can lift	lug back
2134-25A*	25.4mm/1"	3µm	1.5µm	109.5	38.5	41	5	2.2N	cannot lift	flat back
2134-50A*	50.8mm/2"	3µm	1.5µm	201	32	72	4	2.5N	—	flat back

### High accuracy

Ruby probe

Adjustable resolution: 0.0002mm/0.00001"

0.001mm/0.00005"

0.01mm/0.0005"

(mm)

Code	Range	Accuracy	Hysteresis	A	B	C	ØD	Maximum measuring force	Cap	Remark
2134-101A*	12.7mm/0.5"	1.5µm	1µm	77.4	26	21.4	4	1.5N	can lift	flat back
2134-101AL*	12.7mm/0.5"	1.5µm	1µm	77.4	26	21.4	4	1.5N	can lift	lug back
2134-251A*	25.4mm/1"	1.8µm	1µm	116.1	42.5	44	4	2.2N	cannot lift	flat back

\* Supplied with manufacturer inspection certificate

### Smart digital indicators

Code

2134-□□□□S\*

\* Supplied with manufacturer inspection certificate

Code examples:

Original code	Smart digital indicator code
2134-10A	2134-10AS
2134-10AL	2134-10ALS

- When the contact point moves, the program auto-starts data collection of the maximum value. After the contact point returns to the free position, it will automatically transmit the maximum value. Cyclic measurement is available.
- It is applicable for data collection in continuous measurement (such as collecting the highest point of each tooth during the rotation of a multi-tooth workpiece).